

# *artifacts*

January-April 2023

# DIRECTOR'S LETTER

Jason Steuber, Appleton Director



Dear Appleton Members,

New Year wishes and friendly tidings for a happy and healthy 2023!

It's official — your Appleton Museum of Art is 35 years old. With the support of our members and College of Central Florida's leadership, the Appleton continues to display, preserve and expand the permanent collection and its educational programming through endowments, exhibitions, cultural and social events and community engagements.

We also begin 2023 with a new Strategic Plan that will guide us over the next five years.

Thank you all for your memberships as they provide valuable funding that helps ensure we meet the goals set forth in the 2023-2028 Strategic Plan, and the needs of our community, locally and beyond. This year you can look forward to special exhibitions that celebrate diversity and the work of Florida artists, exhibitions curated with masterpieces from the permanent collection that are new or have never been displayed, and educational programs that feature visiting artists and scholars and special studio art workshops. We invite you to celebrate year 35 with us and enjoy the 5,000 years of human creativity and art that can be found right here in Marion County.

Again, I offer my sincere appreciation to all members for your support, dedication and advocacy. We could not do it without you!

With deep respect,

A handwritten signature in black ink, appearing to read 'Jm Steuber'.



# COMMUNITY EVENTS

## Free First Saturdays

We're pleased to continue our Free First Saturday program for all of 2023. It is with great pleasure that we can continue inviting the community to visit once a month to enjoy the permanent collection, special exhibitions, Artspace, and other special programming — all free of charge. We would also like to thank Marion Cultural Alliance, which has provided grant funding to support this program. Attendance has been high on each Free First Saturday, and though members always receive free admission, we encourage you to bring friends, family and co-workers to help encourage art appreciation and build future supporters of the arts.



### Upcoming Free First Saturdays 10 a.m. – 5 p.m.

January 7, February 4, March 4, April 1, May 6, June 3  
*Big Lee's BBQ food truck on-site from 11 a.m. – 2 p.m.*



### FREE FIRST SATURDAY SPECIAL EVENTS

#### Gallery Tour with Debora Greger Saturday, February 4, 11 a.m.

Take a tour of the "Pre Post Poetic" exhibition with artist and poet Debora Greger. Her solo exhibition of mixed-media collages juxtapose pre- and post-pandemic themes of the everyday world. This tour is free as part of Free First Saturday.



#### Remembering Marion County's African American Achievements A Talk by Cynthia Wilson-Graham Saturday, February 4, 2 p.m.

This talk by educator, author and photographer Cynthia Wilson-Graham will acknowledge the successes and contributions of underrepresented African Americans, while highlighting their cultural heritage and resilience. This talk is free as part of Free First Saturday.



#### Gallery Tours with Hiromi Mizugai Moneyhun Saturday, March 4, 11 a.m. and 2 p.m.

Take a tour of the "Paper Thin & Shadow Deep" exhibition with artist Hiromi Mizugai Moneyhun. Her three-dimensional cut paper pieces are the result of a multistep process which produces art that is at once amusingly lighthearted and startlingly alive. Tours are free as part of Free First Saturday.

# ON VIEW

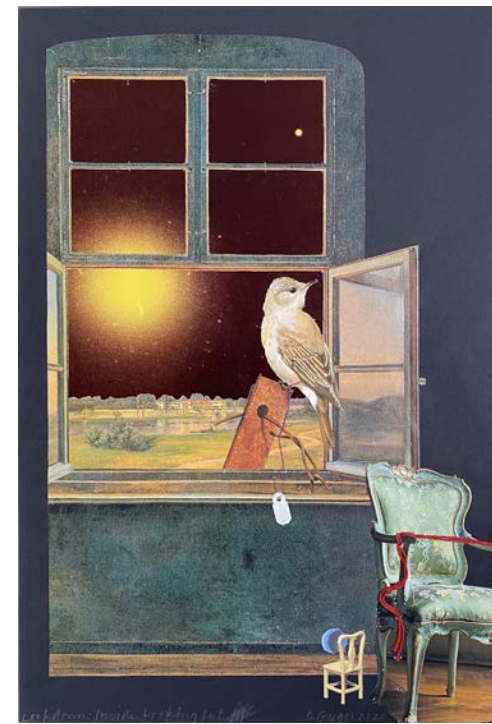
## In the Galleries



Through May 21

## BIG & BOLD IN MODERN & CONTEMPORARY ART

Enjoy some of the largest works in the Appleton collection in “Big and Bold,” on view in the Edith-Marie Gallery through May 21. All are works of modern and contemporary art, many of which have never been exhibited at the Appleton. Over a century separates the earliest and most recent works, which range from paintings and ceramics to sculptures and oversized prints. Dated to 1901 and measuring over 10-foot wide and 4-foot high, Theodore Victor Carl Valenkamph’s ship painting welcomes visitors. Meanwhile, a two-foot tall black-and-white hand-coiled clay vessel, hand painted by Victoria Garcia in 2000, epitomizes indigenous Zuni and Pecos motif designs and techniques. The vibrant acrylic colors on George Snyder’s “Florida Pink Ignition” are painted with precision on a circular canvas, creating a mesmerizing optical experience. Conversely, Theodore Wadell’s earthy, muted tones depict a meditative landscape with horses perfectly scattered throughout (pictured above and on the cover).



Debora Greger, “Look Room: Inside Looking Out III,” 2020, mixed-media collage, 12 x 18 in.

Through June 18

## PRE POST POETIC: HAND-STITCHED COLLAGES BY DEBORA GREGER

Gainesville-based poet and visual artist Debora Greger is a professor emerita at the University of Florida, where she taught English and Creative Writing. As poet-in-residence in universities and art museums, she led students to look at art and develop ways of writing about it. She had a solo exhibition at a gallery in London, England. Her collages have graced the covers of books of poetry, books of poetry criticism and literary journals. The 28 works on display in the Balcony Gallery for Florida Artists date from 2019 through 2021. Greger’s juxtapositions transmute our pre- and post-pandemic everyday worlds into poetry.

**Gallery Tour with Debora Greger  
Saturday, February 4, 11 a.m.**

Open to all visitors; there is no fee to attend.

We asked the artist a few questions to learn more about her work and process.

### Can you let us know where you’re from, and when you arrived in Florida?

I grew up in southeastern Washington state, in a sagebrush and tumbleweed desert, downwind from a nuclear plant. After many detours here and there, I moved to Florida when my husband took a job at UF in the 1980s.

### Were you a visual artist first or a poet? Is there a difference?

Hard to say. I grew up in a house full of low-cost art supplies, books from the public library, and a gift subscription from the New Yorker. It was a golden age of modern poetry in that magazine. Our drawing paper was what Dad brought home from work at the reactor. Paper blank on one side was stamped “DECLASSIFIED” on the other.

### Your collages are three-dimensional. Do you see your poetry that way?

The 3-D elements — the hand-stitching, the tags — are to heighten the layers of paper on paper and create a little bit of elevation. 3-D in poems? I have tried, when I was poet-in-residence in an art museum, writing a few poems that took the shapes of their 3-D subjects. But a poet is working in 2-D, not 3-, I quickly discovered. Still, it was a very useful exercise in juggling words to fit a shape. I thought I managed a swan, only to discover two things: mine was going the wrong direction, and I had more to say. I couldn’t turn the swan around. But I could give it a reflection to glide on, as it drifted away from the original art that inspired it.

### Are your collages poems?

Good question, and not one I know how to answer. A poet cooks up the titles for the pieces. I’m unsure about the relation between my visual and my written work. The page is less blank when you start a collage because you’re working with printed images than when you’re trying to find the way into a new poem.

Debora Greger, “Look Room: Inside Looking Out VI,” 2020, mixed-media collage, 12 x 18 in.



Through June 18

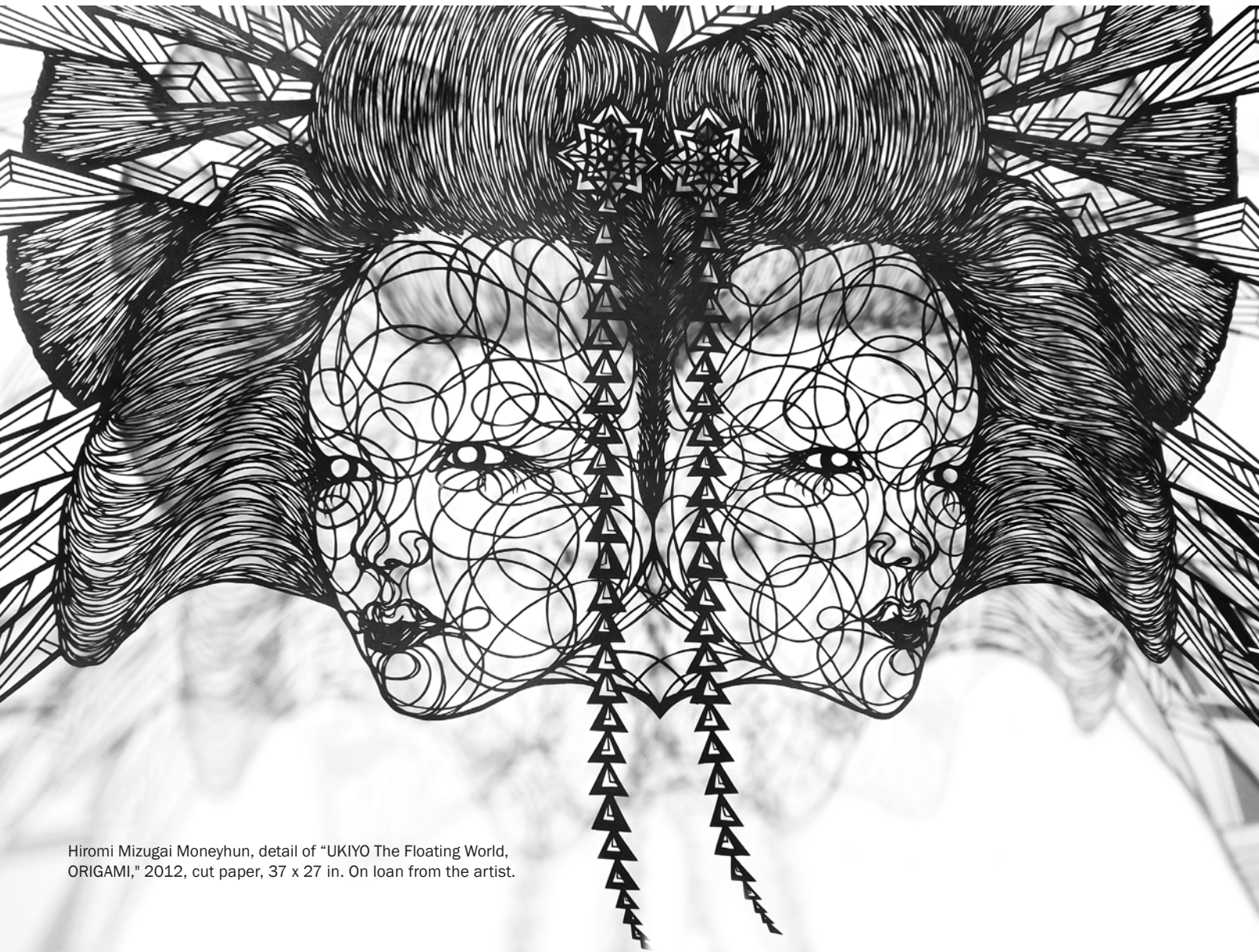
## PAPER THIN & SHADOW DEEP: HIROMI MIZUGAI MONEYHUN

In the second-floor Modern & Contemporary Galleries, see the intricate work of Jacksonville-based artist Hiromi Mizugai Moneyhun in “Paper Thin and Shadow Deep.” Moneyhun moved to Florida in 2004 from her hometown of Kyoto, Japan. Her three-dimensional, cut-paper pieces are the result of a multi-step process and are both traditional and modern at the same time. Her most significant early influence was “ehon,” a general term given to Japanese picture books, especially those that featured images taken from original paper cuts by Giro Takihira, who also was known as a woodblock print artist. Moneyhun’s tenacious attention to detail and abundance of patience are exemplified in each of her works, and they invite the viewer in for closer inspection of her mastery of this technique.

**Gallery Tours with Hiromi Mizugai Moneyhun**  
**Saturday, March 4, 11 a.m. and 2 p.m.**

Take a tour of "Paper Thin & Shadow Deep" and learn more from the artist about her work and techniques. Tours meet in the exhibition at 11 a.m. and 2 p.m. Tours are free as part of Free First Saturday.

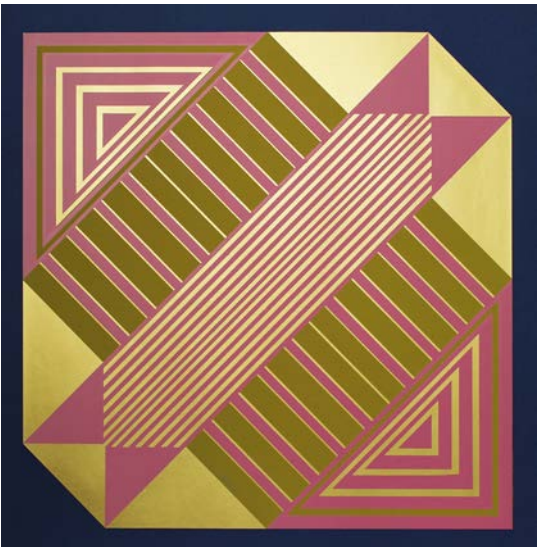
See *Education Programs* pages for information on a Master Class workshop with Hiromi Mizugai Moneyhun.



Hiromi Mizugai Moneyhun, detail of “UKIYO The Floating World, ORIGAMI,” 2012, cut paper, 37 x 27 in. On loan from the artist.

January 14–April 9

## THE SHAPE OF THINGS: OP ART & GEOMETRIC ABSTRACTION



Drawn from the Appleton’s modern and contemporary permanent art collections, see a selection of Op Art and Geometric Abstraction paintings and prints, on view in the second-floor Preview Gallery. The exhibition includes work by Victor Vasarely, Richard Anuszkiewicz, Takao Tanabe, Lenore Laine, and more.

Short for Optical Art, Op Art began in the 1960s and uses shape, color and repetition to create optical illusions. Closely related, Geometric Abstraction is a form of abstract art that relies on shape, color and pattern to create nonrepresentational images. Many artists working in this genre look to mathematics for inspiration, each creating their own artistic, visual vocabulary.

Takao Tanabe (Canadian, b. 1926), "Untitled," 1968, Screenprint, 21 x 21 in.

January 28–April 9

## FOCUS ON THE ESSENCE: THE PHOTOGRAPHY OF ANNE NOGGLE

A native of Evanston, Illinois, Anne Noggle (1922–2005) learned to pilot planes in her teens, and later to photograph in her forties. With degrees from the University of New Mexico, she stayed on board and became a professor on the Albuquerque campus. Well before she curated the groundbreaking blockbuster “Women of Photography: An Historical Survey” exhibition and catalog in 1975 at the San Francisco Museum of Art, Noggle earned her career stripes as a captain in the U.S. Air Force (Women’s Air Force Service Pilot (WASP), Korean War pilot, private pilot instructor, agricultural crop duster and air show stunt pilot.

Drawn from the Appleton’s permanent collection of photography, "Focus on the Essence" explores themes that Noggle returned to again and again: self-portraits, both formal and casual, the aging process and femininity. The Appleton is proud to share examples from more than 100 photographs generously donated to the museum by the Anne Noggle Foundation.



Anne Noggle (American, 1922-2005), "Self-image [car shadows on face]," 1979, Black and white photograph, 16 x 20 in. Gift of Anne Noggle Foundation.

# CURATORIAL NEWS

## Fall Projects & Donations



### OUTDOOR SCULPTURE RESTORATION

In 2014, "Childhood Memories" by Ocala artist Mike Zeak was installed in the Appleton's outdoor sculpture walk. Made from aluminum, the sculpture features three rotating blocks with letters from the alphabet that can be combined to spell the words FUN ART FOR ALL.

Rusting is a form of metal corrosion that happens when the metal is exposed to air or water, causing it to crack, discolor and become weak. Because this is an outdoor sculpture, the rusting process is normal. We were happy to have the artist at the Appleton this fall to deinstall, clean and make minor repairs to this beloved work of art. The sculpture has now been reinstalled in its original location, outside the Education Wing, for all to once again enjoy.

To learn more about Mike Zeak and "Childhood Memories," check out our free mobile app, accessed through the Apple App Store and Google Play. You can also use your desktop computer by visiting [AppletonMuseum.org](http://AppletonMuseum.org) and selecting "Online Resources" from the Education menu.

Mike Zeak (on left) and Appleton registrar David Reutter reinstall the restored "Childhood Memories" sculpture.

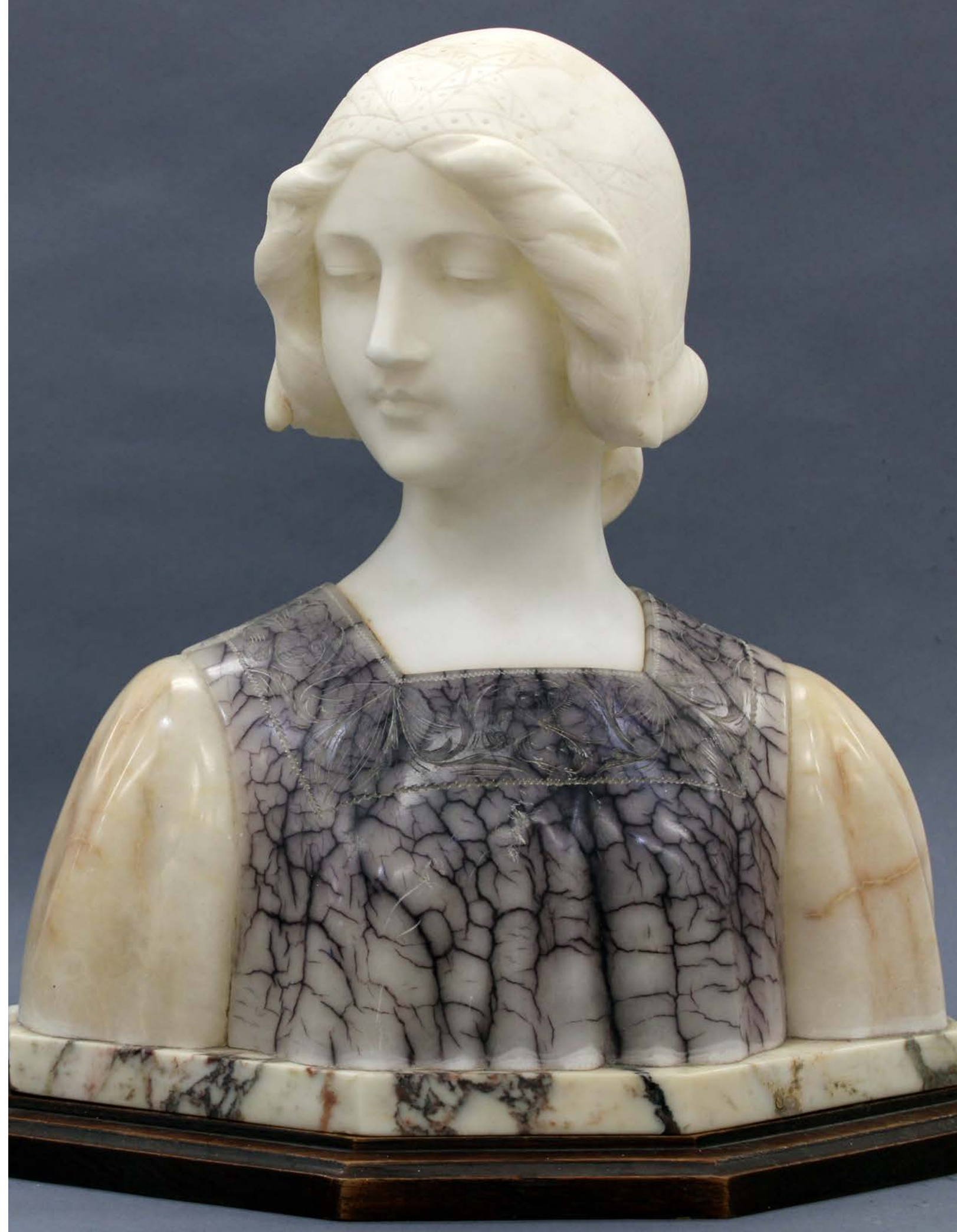
### NEW TO THE COLLECTION

Recently added to the Appleton collection, a selection of European, American and Asian art from the Estate of Mary Ann Cofrin. The marble bust pictured on the opposite page was made by Auguste-Henri Carli. Born in the French city of Marseille, he won a competition in 1890 that earned him a coveted scholarship to earn his degree at the Beaux-Arts de Paris. Carli went on to win many private and state commissions for his sculptures, such as figures of children installed near entry doors of the Grand Palais in Paris.

Also part of this donation, the vase on this page from the Qing dynasty. With a copper-red crackled glaze, the well-proportioned object exemplifies symmetry and control of form and coloration. Deep strawberry-red hues give way to lightly pale edges of the top flared rim and foot at the bottom. Vases like these were prized possessions that often graced the homes and studios of middle and upper class collectors during the late eighteenth and nineteenth centuries in China as well as abroad.



Above: Copper-red Vase, China, Qing dynasty (1644-1911), 18th/19th Century, Glazed porcelain, 14 in., Gift of the Estate of Mary Ann Cofrin.  
Opposite page: Auguste-Henri Carli (French, 1868-1930), "Dutch Woman," Marble, 15 5/8 x 14 1/4 in. Gift of the Estate of Mary Ann Cofrin.



# EDUCATION PROGRAMS

## For Adults

### ART 101

Let these three-hour workshops inspire your creative side. Appropriate for ages 16 and up; all materials are provided. Register at [AppletonMuseum.org](https://AppletonMuseum.org).

#### **Watercolor with Sue Primeau**

Tuesday, January 10, 10 a.m.–1 p.m.

#### **Florida Landscape Acrylic Painting**

Tuesday, March 14, 10 a.m.–1 p.m.

\$50 Appleton members | \$75 nonmembers

### DRAWING WORKSHOP

Learn the basics of drawing in this two-part workshop. All skill levels are welcome. Register at [AppletonMuseum.org](https://AppletonMuseum.org).

#### **Intro to Drawing**

Saturdays, April 22 & 29, 1–4 p.m.

\$75 Appleton members | \$100 nonmembers

### NEW! MASTER CLASS SERIES

Learn from the masters in this series of special classes, designed for those who are ready to take their work to the next level. Register at [AppletonMuseum.org](https://AppletonMuseum.org).

#### **Watercolor with Sue Primeau**

Saturdays, February 25, March 4, 11, and 25, 1–3 p.m.

In this four-week class, learn at your own pace with plenty of hands-on painting time in class and one-on-one instructor assistance with informative critiques. \$150 Appleton members; \$175 nonmembers. Materials not included; a supply list will be provided upon registration.

#### **Cyanotype Prints with Tyrus Clutter, CF Assistant Professor**

Saturday, April 15, 1–4 p.m.

Using both paper and fabric, learn how to create cyanotype prints suitable for framing with a variety of materials, including botanicals. \$50 Appleton members; \$75 nonmembers. All materials included.

#### **Florida-Style Kyo Uchiwa Fan with Hiromi Mizugai Moneyhun**

Saturday, May 20, 10 a.m.–12:30 p.m. and/or 2–4:30 p.m.

Learn paper-cutting techniques from the artist to make a Japanese paddle fan inspired by the flora and fauna of Florida. Two times are available. \$75 Appleton members; \$95 for nonmembers. All materials included.

### VIRTUAL ART 101

Take an online adaptation of our popular Art 101 workshops. Learn something new or practice your skills in one, two-hour session. Workshops are held on Zoom, where you can follow along step-by-step with our instructor, and recorded for later viewing. Registration will appear on [Eventbrite.com](https://Eventbrite.com) one month before the workshop, or visit [AppletonMuseum.org](https://AppletonMuseum.org).

#### **Florida Landscape Acrylic Painting**

Tuesday, April 11, 11 a.m.–1 p.m.

There is no fee to participate; a supply list will be provided.



### APPLETON BOOK CLUB

Led by Museum Educator Hollis Mutch, join us for a free, virtual discussion on selected books. Open to both new learners and professional scholars. Book club meetings are free with pre-registration at [Eventbrite.com](https://Eventbrite.com), and held on Zoom. Visit [AppletonMuseum.org](https://AppletonMuseum.org) for registration link.

#### **"Remembering Paradise Park: Tourism and Segregation at Silver Springs" by Lu Vickers and Cynthia Wilson-Graham**

Tuesday, February 7, 7 p.m. (Co-author Cynthia Wilson-Graham will join the discussion.)

### DIG INTO CLAY

These six-week sessions offer potters of all skill levels a chance to practice and develop new skills and techniques in hand building or wheel throwing through fun and functional ceramic projects inspired by your own interests. Fee includes 25 lbs. of clay, glazes, and firing. Register at [AppletonMuseum.org](https://AppletonMuseum.org).

#### **Wheel Throwing**

Saturdays, February 18–March 25, 10 a.m.–12:30 p.m.

#### **Hand Building**

Saturdays, April 1–May 6, 10 a.m.–12:30 p.m.

\$210 Appleton members | \$245 nonmembers

## For Children

### MUSEUM & ME PRE-K PROGRAM

This multi-sensory program introduces ages 2–5 to the Appleton. Each session will start with story time, a brief visit to the galleries to examine a work of art, followed by a corresponding art activity in the Artspace. Children must have at least one adult with them at all times.

**Tuesdays, 10:30–11:30 a.m.**

**January 3, February 7, March 7, April 4 and May 9**

Free for Appleton members; included with admission fee for nonmembers. Advance registration required at [AppletonMuseum.org](https://AppletonMuseum.org). Registration begins one week before the program date at [AppletonMuseum.org](https://AppletonMuseum.org). Limited to the first 15 children registered.

### ART EXPLORATIONS

Art Explorations are six-week classes for ages 7–12, focusing on painting and drawing or clay. Two options are offered — after school on Wednesdays or Saturday mornings. Classes are appropriate for all skill levels.

#### **Painting and Drawing**

Wednesdays, January 4–February 8, 3:30–5 p.m.

Saturdays, January 7–February 11, 10:30 a.m.–noon

#### **Clay Creations**

Wednesdays, February 15–March 22, 3:30–5 p.m.

Saturdays, February 18–March 25, 2–3:30 p.m.

\$95 Appleton members | \$115 nonmembers

All materials are included with the registration fee. Register at [AppletonMuseum.org](https://AppletonMuseum.org).



1



10



9



2



5

# APPLETON ART SCENE

Counter-clockwise from top, opposite page: (1) Maharajah Flamenco Trio in September with a song inspired by the Appleton collection. (2) Also in September, Dr. Welson Tremura and Grammy-winning Dr. José Valentino gave a musical presentation on elements of Latin American music. (3) Local Hispanic-owned businesses provided information and raffles to visitors at the October 8 Hispanic Heritage Festival, hosted with CF Student Affairs. (4) Dr. Rebecca Dominguez-Karimi with guests after her October 8 talk on how Hispanic women view issues of race and ethnicity in their lives. (5) CF Student Ambassadors volunteer at the Hispanic Heritage Festival.

Counter-clockwise from bottom, this page: (6) At the December 3 holiday community day, visitors took photos with Santa, (7-8) made holiday crafts in the Artspace (9) and took photos with Belle and the Beast from Once Upon a Party. (10) Bridge to Hope visited the Appleton for a special tour and art activity.



8



3



4



6



7

# ART OF LIVING

## Benefits for Appleton Members



### DIRECTOR'S CIRCLE RECEPTION

**Saturday, March 4**  
**5:30–7:30 p.m.**

Director's Circle members are invited to celebrate two new exhibitions, "Paper Thin & Shadow Deep" and "Pre Post Poetic," with the exhibition artists Hiromi Mizugai Moneyhun and Debora Greger, respectively. Enjoy wine, hors d'oeuvres and the opportunity to speak with the artists about their work.

RSVP is required to Colleen Harper, harperc@cf.edu, or 352-291-4455, ext. 1831.

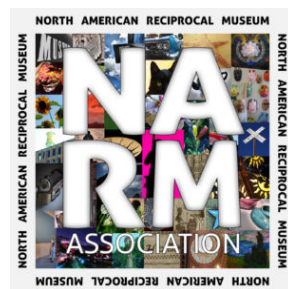
Hiromi Mizugai Moneyhun, (detail) "VISIONESES 2," 2012, cut paper, 48 x 28 in.

## YOUR RECIPROCAL MEMBER BENEFITS

The Appleton is proud to offer members enrollment in two reciprocal membership programs that expand your benefits to a wide variety of other museums, zoos, historical centers and cultural institutions. As a member, we want you to get the most out of your membership.



Members at every level are automatically enrolled in the **Southeastern Reciprocal Membership Program**. Use your Appleton membership card to get free admission to more than 200 cultural and historical institutions in the Southeast, all the way from the Institute of Contemporary Art in Miami to the Crystal Bridges Museum of Art in Bentonville, Arkansas. To learn more, visit [semcdirect.net](http://semcdirect.net) or [AppletonMuseum.org](http://AppletonMuseum.org).



In addition to SERM, members at the Director's Circle level (\$125 and above) are automatically enrolled in the **North American Reciprocal Museum Association**. Use your Appleton membership card to get free admission to 1,244 art museums and galleries, historical museums and societies, botanical gardens, children's museums, zoos and more. NARM connects members across Bermuda, Canada, El Salvador, Mexico and the United States. To learn more, visit [narmassociation.org](http://narmassociation.org) or [AppletonMuseum.org](http://AppletonMuseum.org).

To join, renew or upgrade your existing membership, please contact Colleen Harper, harperc@cf.edu, or 352-291-4455, ext. 1831. Or, join online at [AppletonMuseum.org](http://AppletonMuseum.org) by selecting "Become a Member" from the Support menu.

## JANUARY-APRIL 2023 DINING DEALS

Enjoy more as a member by visiting some of our favorite local businesses where you'll receive special discounts — just for being an Appleton member! We appreciate your support, and to say thank you, we hope you'll benefit from these Winter 2023 coupons from our generous business partners.

To redeem, simply clip the coupon you want to use and present it to the participating business. Coupons expire on April 30, 2023.



**Appleton Museum of Art, Midtown and Maricamp locations, only**  
Facebook @mybigleesbbq | Instagram @mybigleesbbq | [mybigleesbbq.com](http://mybigleesbbq.com)

**10% Off**

*Excludes catering orders; cannot be combined with other offers or discounts.*



**Giggles Gourmet Popcorn Company | 6124-2 S.W. Highway 200**  
Facebook @gigglespopcorn | Instagram @gigglespopcorn | [gigglespopcorn.com](http://gigglespopcorn.com)

**20% Off**

*Valid on any order over \$15; cannot be combined with other offers.*



**La Cuisine French Restaurant | 48 S.W. First Ave.**  
Facebook @lacuisineocala | Instagram @lacuisineocala | [lacuisineocala.com](http://lacuisineocala.com)

**10% Off**

*Valid Tuesdays-Thursdays; not applicable February 14–16.*



If you would like to highlight your business through an Appleton members-only dining deal, please contact Jason Steuber, [steuberj@cf.edu](mailto:steuberj@cf.edu). Dining deals are featured on the Appleton website, in Artifacts magazine, and in the weekly Appleton eblast that is sent to more than 5,000 contacts. It's a great way to promote your business while reaching new audiences. Deals are determined by the business, including exceptions, such as blocked dates, as needed.



4333 E. Silver Springs Blvd.  
Ocala, FL 34470-5001  
352-291-4455 | [AppletonMuseum.org](http://AppletonMuseum.org)



Follow Appleton Museum



#### On the cover:

Theodore Waddell (American, b. 1941), "Bridger Mountain Horses #2," 1999,  
Oil and encaustic on canvas, 78 x 108 in. Gift of the Artist.

College of Central Florida offers equal access and opportunity in employment, admissions and educational activities. The college will not discriminate on the basis of race, color, ethnicity, religion, gender, pregnancy, age, marital status, national origin, genetic information, sexual orientation, gender identity, veteran status or disability status in its employment practices or in the admission and treatment of students. Recognizing that sexual harassment constitutes discrimination on the basis of gender and violates this policy statement, the college will not tolerate such conduct. The following person has been designated to handle inquiries regarding the nondiscrimination policies: Dr. Mary Ann Begley, Director of Diversity and Inclusion – Title IX Coordinator, Ocala Campus, Building 3, Room 117H, 3001 S.W. College Road, 352-291-4410, or [Equity@cf.edu](mailto:Equity@cf.edu).

# Welcome TO THE DIRECTOR'S CIRCLE

Thank you to our Director's Circle members for your support! To join, renew or upgrade your membership at any level, contact Colleen Harper, [harperc@cf.edu](mailto:harperc@cf.edu), or 352-291-4455, ext. 1831. Or, visit [AppletonMuseum.org](http://AppletonMuseum.org).

New, Upgraded and Renewed: August 1, 2022–November 30, 2022

Dr. Hina Ahmed  
Mark Anderson and Rebecca McMurrer  
Mr. and Mrs. Barry A. Barringer  
Mrs. Brittany Bisbee  
Mr. and Mrs. Paul Czyzewski  
Ms. Judith J. Davie  
Mr. and Mrs. Robert DeJohn  
Ms. Mary Delancey  
Mr. and Mrs. James Dygert  
Mr. Phil Edmonds  
Ms. Shirley A. Halcomb  
Ms. Marjorie Henry  
Mr. and Mrs. David Keitz  
Mrs. Helen Klocko  
Ms. Daneen Muscato  
Mr. and Mrs. B J. Myers  
Mr. and Mrs. Robert New

Ms. Gail Newstein  
Ms. Susan Olsen  
Ms. Bonnie G. Olson  
Ms. Louise Petz  
Mr. Matthew W. Robertson  
Mrs. Mary M. Robson  
Mr. and Mrs. George Saunders  
Ms. Bonnie Schirmers  
Ms. Sarah Sharp  
Mrs. Mary Shutts  
Ms. Martha K. Slemmer  
Mr. and Mrs. David Taylor  
Mr. and Mrs. Mark C. Waiwada  
Mr. George D. Whitmore  
Bonnie and John Williams  
Mr. and Mrs. David Wolfersberger  
Mr. Robert G. Wuestenhagen



Judy Johnson, Leslie Hammond and Barbara Fitos at the "BLOW UP II" Director's Circle reception.